



Специфика межкультурного общения

Вебинар для волонтеров-переводчиков Оргкомитета "Сочи 2014« (29.10.2013г.)



Профессор Роза Кавеноки

Руководитель русского отделения Высшей школы перевода Монтерейского института международных исследований в Монтерее, штат Калифорния.

Специфика межкультурного общения



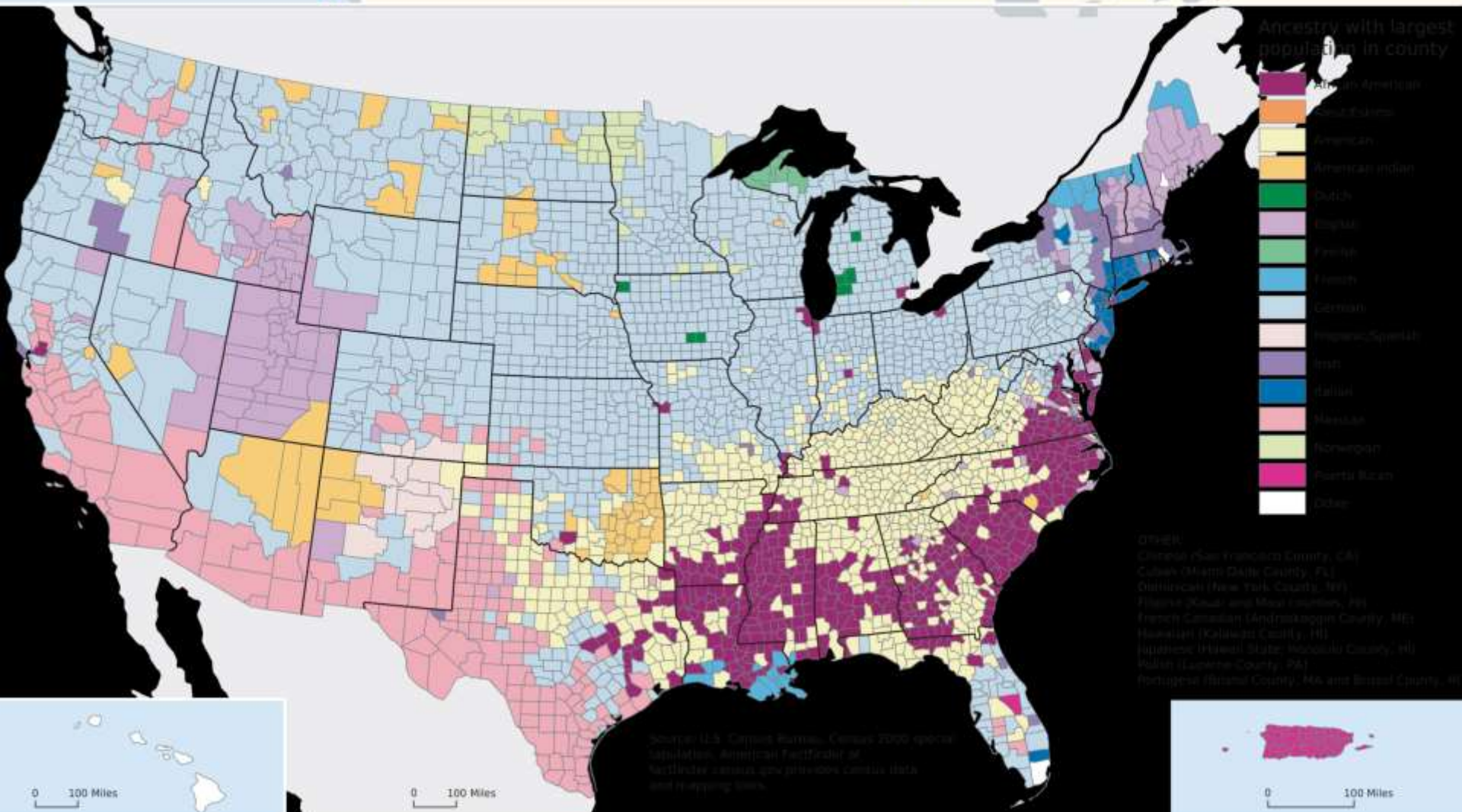


Largest Ancestry: 2000

(Data based on sample. For information on confidentiality protection, sampling error, nonsampling error, and definitions, see www.census.gov/prod/cen2000/doc/sf3.pdf)



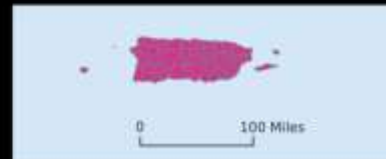
Ancestry with largest population in state
see categories below



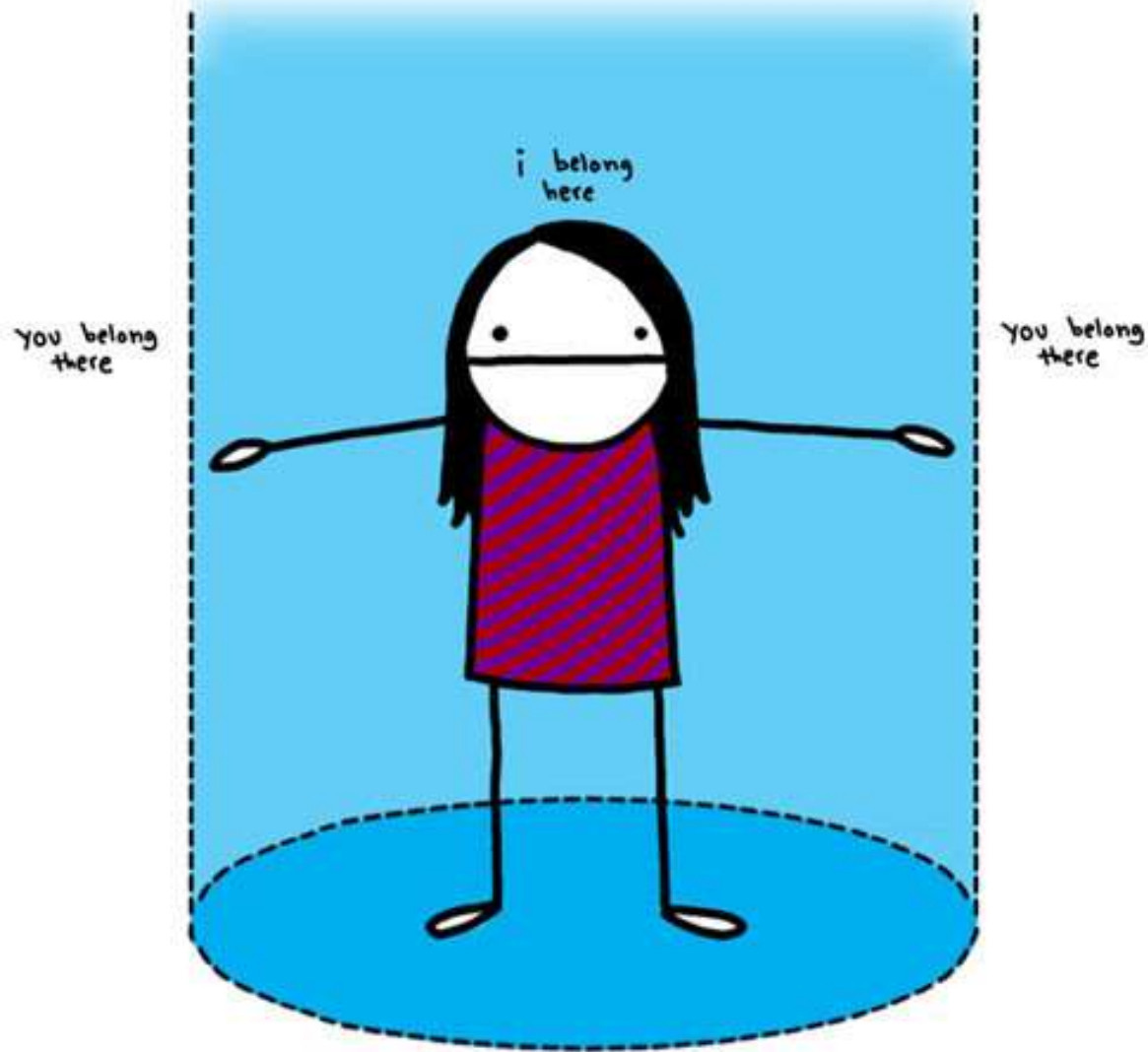
- Ancestry with largest population in county
- Black American
 - Black female
 - American
 - American Indian
 - Dutch
 - English
 - French
 - German
 - Hispanic/Spanish
 - Irish
 - Italian
 - Japanese
 - Norwegian
 - Porto Rican
 - Other

- Other
- Chinese (San Francisco County, CA)
- Cuban (Miami Dade County, FL)
- Dutch (New York County, NY)
- French Canadian (Androscoggin County, ME)
- Irish (Kalamazoo County, MI)
- Japanese (Hawaii State, Honolulu County, HI)
- Italian (Lucerne County, PA)
- Portuguese (Bristol County, MA and Bristol County, VT)

Source: U.S. Census Bureau, Census 2000 special tabulations. American Factfinder at factfinder.census.gov provides census data and mapping tools.



My Personal Space



Don't stand in it!!



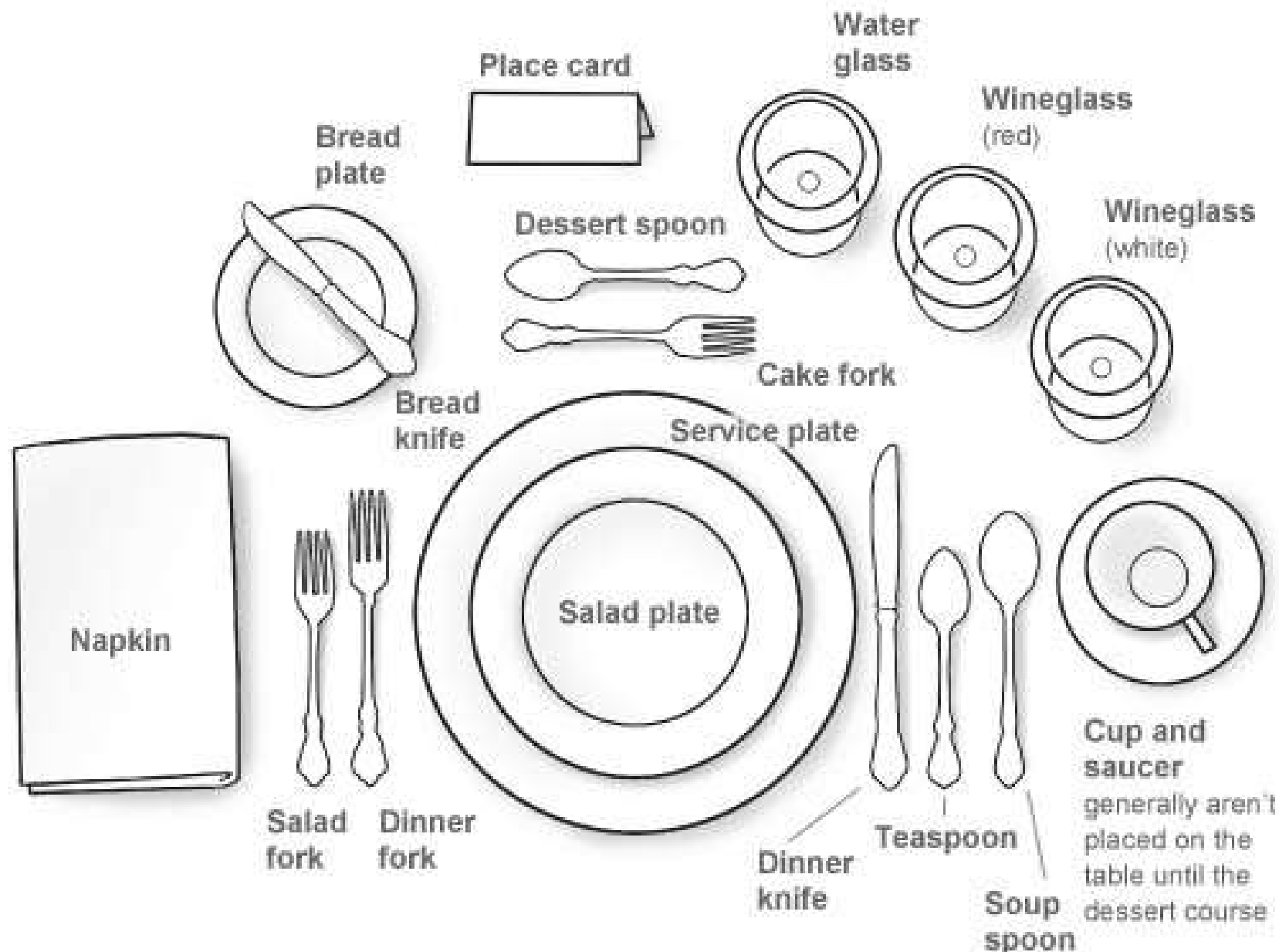


Weather

Sports

Popular culture

FORMAL PLACE SETTING





Religion

Money

Family and politics

DO



Tip: Carry a blazer for more formality



Tip: To make the look less formal, the suit jacket can easily be removed

Shirt cuffs show only slightly at the wrist

Fits well; freshly pressed

Shoes polished

DON'T



Untucked shirt creates an unkempt, messy appearance

Dress shirt and cotton khakis are a mismatch

Too casual for any interview

Messy hair



Tip: Make sure your outfit is free of wrinkles and stains, your hair and nails are well-groomed and your shoes are polished

Shoes, socks not coordinated well with suit

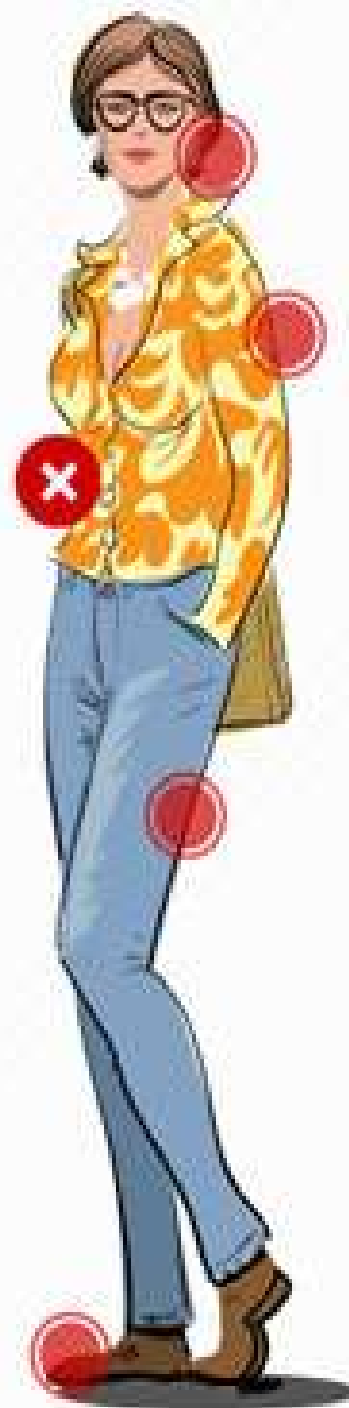
What to wear

Wear natural fibres or blends



What not to wear

Avoid large or bold prints on skirts/slacks.
Avoid blouses that are too bright, too tight, too big, shiny or sheer.



Punctuality



Специфика межкультурного общения

